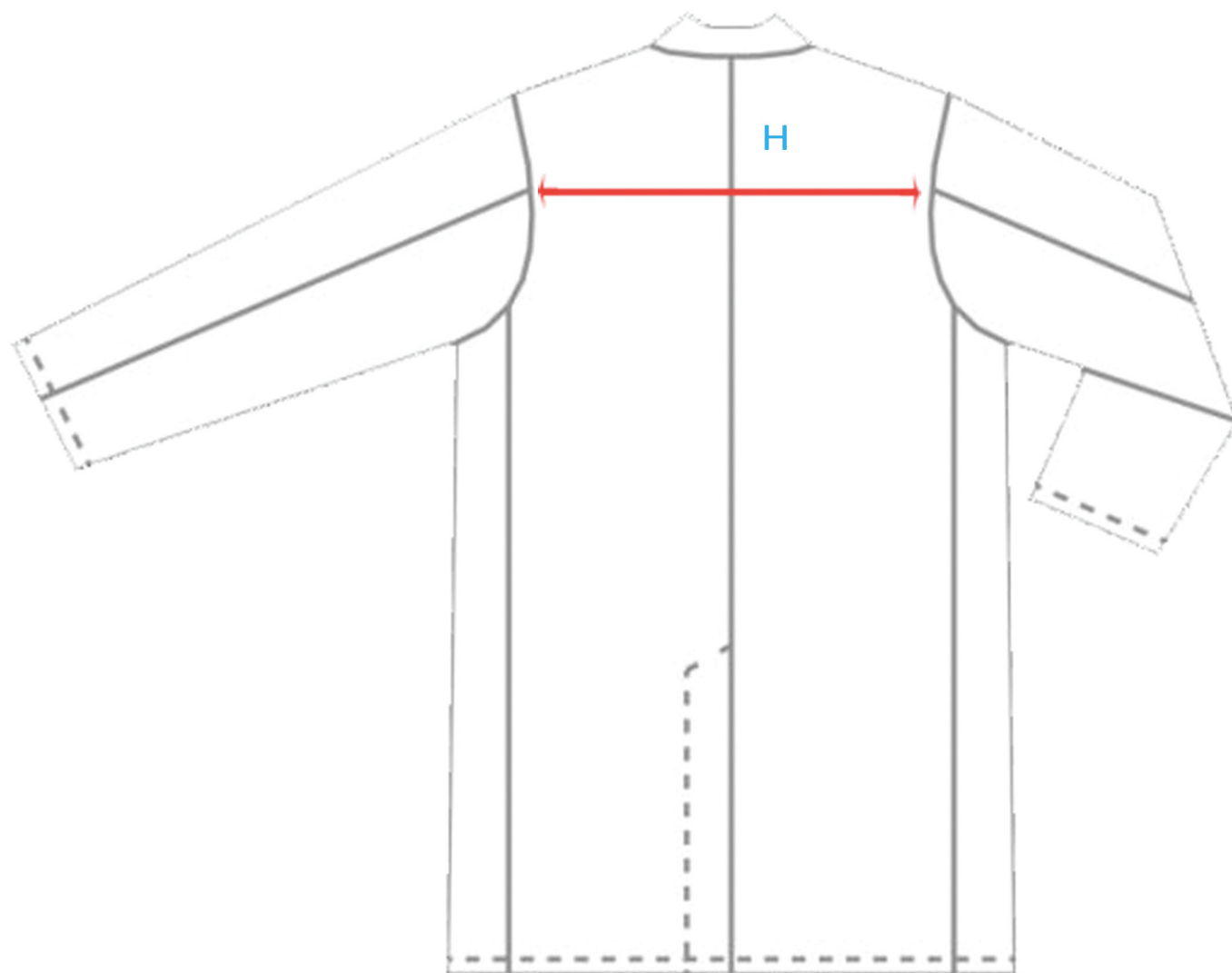


**JUNIOR
8 - 10 ANS :**

A = 10 cm
 B = 43 cm
 C = 19 cm
 D = 76 cm
 E = 85 cm
 F = 79 cm
 G = 85 cm
 H = 30 cm

**JUNIOR
12 - 14 ANS :**

A = 11,5 cm
 B = 52 cm
 C = 22 cm
 D = 88 cm
 E = 97 cm
 F = 91 cm
 G = 97 cm
 H = 35,5 cm



**JUNIOR
10 - 12 ANS :**

A = 10,5 cm
 B = 47 cm
 C = 20 cm
 D = 79 cm
 E = 88 cm
 F = 82 cm
 G = 88 cm
 H = 32 cm

**JUNIOR
14 - 16 ANS :**

A = 12,5 cm
 B = 60 cm
 C = 25,5 cm
 D = 95 cm
 E = 98 cm
 F = 92 cm
 G = 98 cm
 H = 37 cm